

Neos.

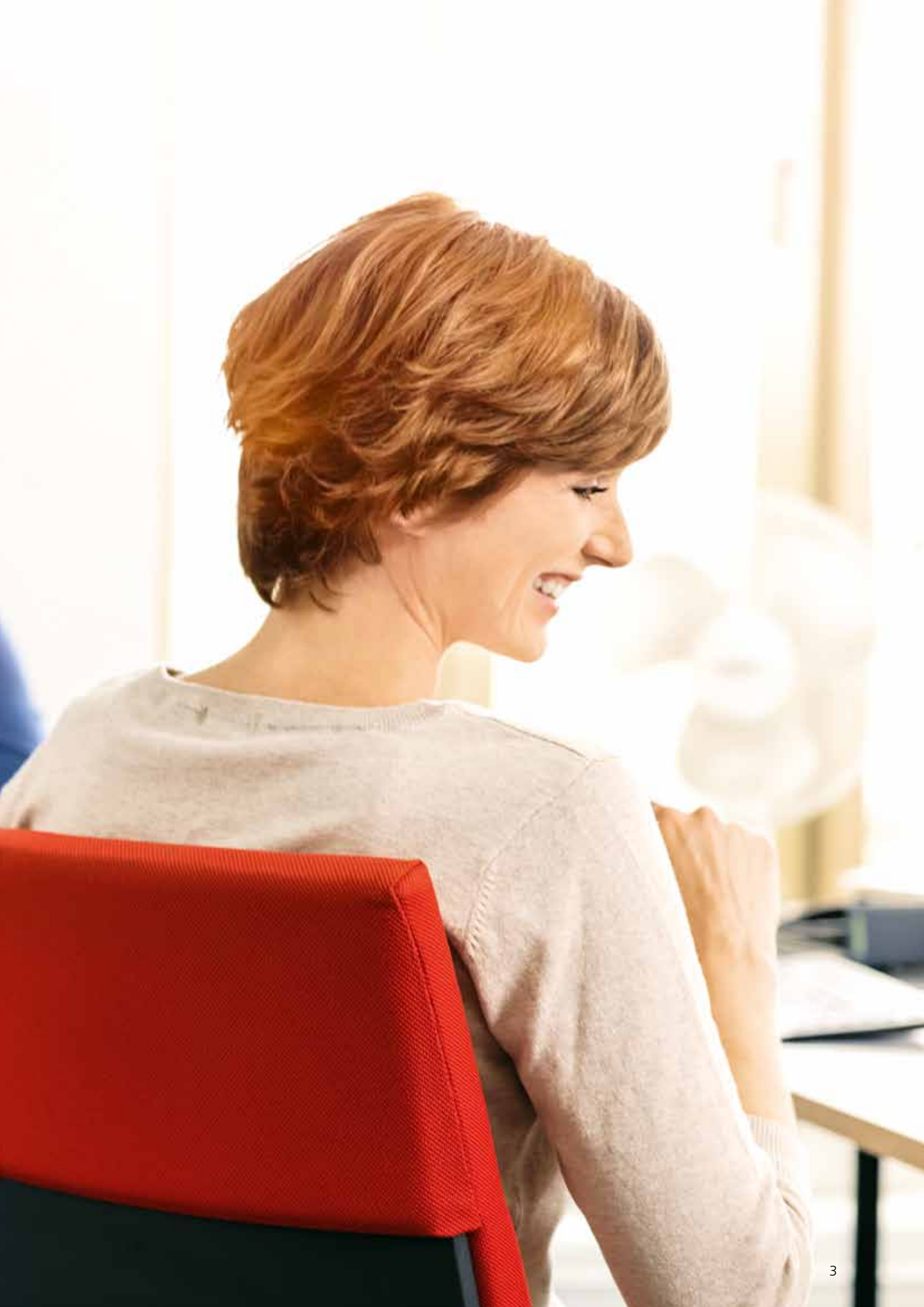
Wilkhahn

Dynamic seating
that's got the look.



Varying and changing postures in the interests of fit bodies and minds is increasingly vital the longer we sit.

So sitting naturally requires retaining the simplicity and range of motion involved. Just take a seat, adjust the seat height and backrest counterpressure. Your body and the chair will do the rest. Neos makes healthy sitting come naturally.







Suitable for people weighing between 40 and 120 kilos. With its streamlined silhouette, special automatic synchro-adjustment, elastic materials and sophisticated upholstery the chair offers exceptional comfort and a fluid range of motion.

A champion in virtually all categories

People are as individual as their characteristics and preferences. They come in physiques that are tall and short, on the heavy or light side, hollow-backed or round-shouldered. And all require a range of motion that inspires confidence with custom-tailored support. Consequently Neos was developed with a lack of complexity in mind. For decades, this principle has been helping Wilkhahn customers to work more healthily and successfully.

- More frequent movement and changes of posture encourage keeping muscles, metabolism and circulation on the ball.
- All settings such as seating and backrest height, armrest positions and weight adjustment are very easy and intuitive to use.
- Also offered are the automatic, ergonomic adaption of the generous-sized, three-dimensional, elastic backrest shell and the comfortable upholstery to different body types and postures.

Just two buttons and the conveniently placed crank make adapting Neos to your level of comfort child's play. And to ensure that style doesn't take a back seat, these functions are integrated in one high-quality, attractive form. After all, healthy sitting is also a question of aesthetics.



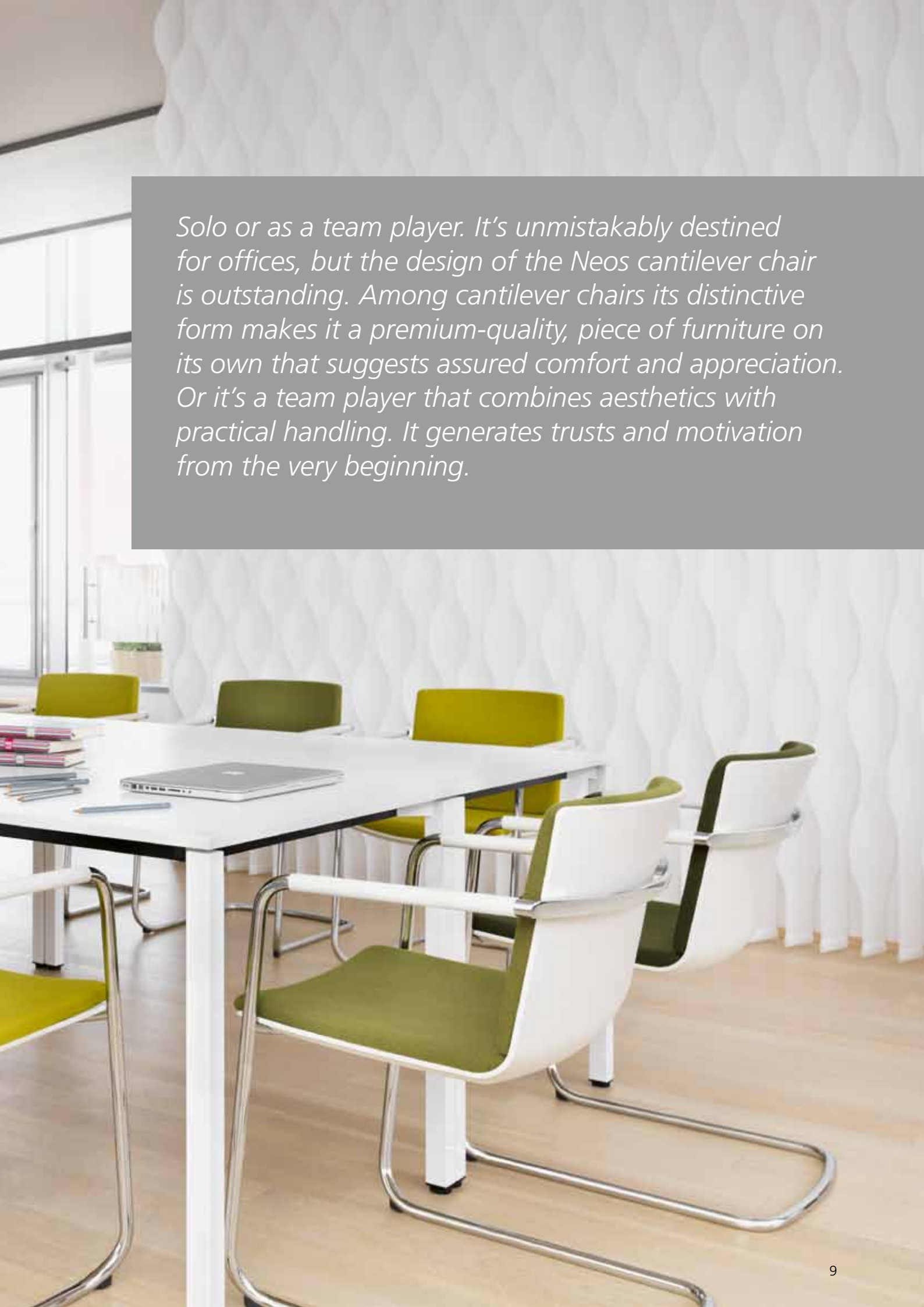


At home everywhere. Modern office environments require a high level of flexibility regarding people, workspaces, usage concepts and processes. What could be better than an office chair that's perfect for all the team and any backdrop?

In telecentres, advice facilities, offices where people work as a team, or conference rooms, ease of use and aesthetic appeal make Neos a favourite choice.







Solo or as a team player. It's unmistakably destined for offices, but the design of the Neos cantilever chair is outstanding. Among cantilever chairs its distinctive form makes it a premium-quality, piece of furniture on its own that suggests assured comfort and appreciation. Or it's a team player that combines aesthetics with practical handling. It generates trusts and motivation from the very beginning.







It's versatile – pure and simple.

Neos gives you the choice of an upholstered backrest shell and a backrest frame which is covered with a transparent membrane. Just by pushing it up, the height of the upholstered, two-shell backrest can be adjusted to seven positions. In the membrane-back version, this function is adopted by an optional lumbar support this is adjustable by 60 mm. Thanks to their vast, three-dimensional flexibility, both backrests adapt perfectly to different body shapes. The ergonomically supportive push-fit seat with breathable upholstery and easy-to-replace cover can be extended to 11 positions. Settings are made while seated and the angle of the pelvic support automatically adapts to the setting made. In a solid, high-quality design with an upholstered back, or an airy-transparent version with

a membrane-covered back – the opening angle and spring characteristics of the synchronous-adjustment kinematics ensure first-class dynamic comfort and a feeling of well-being.

Form and function – pure and simple.

It's not just the comfort, but also the design of Neos that's a welcome feature. The clear contours of the back and swivel arm appear seamless. The smooth aluminium casing of the synchro-adjustment mechanism conveys superb quality and excellent design down to the last detail. The extendable crank to adjust the counter pressure is conveniently placed and integrated in a



form-fit manner in the left of the two buttons at the side. And like the seat depth and the backrest height, the 3-D armrests are adjustable while seated completely intuitively. Along with the large castors, this adds up to extreme ease of use. From whatever angle you look at it, Neos offers the ideal combination of form and function that is excellent value.

Attractive cantilever chairs – pure and simple.

To complement the Neos office chair, the cantilever version also stands out for its fluid form, its top-quality design that's accurate to the last detail, its generous size and pleasant comfort. The smooth, attractively

shaped, unitary seat shell is invisibly attached to the frame. The distance between the outer rail which is thinner towards the inside and the shell serves as a handle and allows elastic adjustment of the back section at the same time. And stacking capability is integrated by the elegant curve of the frame and the V-shaped side protrusion of the seat shell into the form. Comfort, functionality, the variety of upholstery and covers, as well as the quality of the design make Neos cantilever chairs the ideal choices for advice centres. Or as a conference chair. Or as a multi-purpose chair for presentations and seminars.



Function

Swivel chairs have 3D backrests and automatic synchro-adjustment where the angle of the seat and backrest can be altered at an ideal ratio of 1:28. The hardness of the springs can be adjusted infinitely with a crank. The tilt of the backrest is lockable in four positions. The shell for the adjustment mechanism is made of die-cast aluminium. The seat height is infinitely adjustable and the backrest height can be changed by 60 mm in seven positions and in the membrane version optionally by a height-adjustable lumbar support. All models with seat adjustment offer 11 positions ranging from 385–435 mm. The 3D armrests are adjustable in height by 100 mm, in depth by 50 mm and can be pivoted up to 15° inwards and outwards. Offered with a five-star base made of glass fibre-reinforced polyamide or die-cast aluminium, polished, high-lustre polished or bright chrome-plated.

Up to five **cantilever chairs** can be stacked (except for management model 183/5) and have flexible, unitary, black-grey or white through-dyed polypropylene seating shells, integrated stacking and anti-tilt protection, bright chrome-plated steel-tube shells and die-cast zinc outer rails. The armrest pad matches the colour of the shell and is free of PVC. Various types of upholstery and covers are available.

Standards

The Neos swivel chairs comply with the DIN EN 1335, ANSI/BIFMA X5.1 office chair standards and other international office chair standards. If required, NPR 1813 models are available. Depending on the version they also fulfil the requirements of categories A or B of office chair standard DIN EN 1335. The Neos swivel chairs also comply with the stipulations of the “Ergonomically tested” seal.



181/71



181/6



181/6



181/6



183/5



183/3



183/3

More about **Neos**

www.wilkhahn.com

Wilkhahn

Wilkening + Hahne GmbH+Co. KG
Fritz-Hahne-Straße 8
31848 Bad Münder
Germany
Tel. + 49 (0) 5042 999-0
Fax + 49 (0) 5042 999-226
info@wilkhahn.com
www.wilkhahn.com

North America
New York, Chicago
info@wilkhahn.com

Australia
Sydney, Brisbane,
Melbourne
info@wilkhahn.com.au

Belgium, Antwerpen
info@wilkhahn.be

China, Shanghai
info@wilkhahn.com.cn

España, Madrid
info@wilkhahn.es

France, Paris
info@wilkhahn.fr

Great Britain, London
info@wilkhahn.co.uk

Hong Kong
info@wilkhahn.com.hk

Japan, Tokyo
info@wilkhahn.co.jp

Nederland, Rotterdam
info@wilkhahn.nl

New Zealand, Auckland
info@wilkhahn.co.nz

Österreich, Wien
info@wilkhahn.at

Schweiz, Bern
info@wilkhahn.ch

Singapore
info@wilkhahn.com.sg

South Africa, Johannesburg
info@classicwl.co.za

United Arab Emirates, Dubai
info@wilkhahn-me.com