

Healthy and Future-proof Office Workspaces

Wilkhahn



# Wilkhahn

## Screened-off or Open-plan Workspaces?

When work is planned, organized and carried out, the COVID-19 pandemic means healthy and safe offices are top of the agenda. In addition to prevailing health and safety regulations in the workplace, social distancing, screens and special hygiene precautions are extra measures taken to prevent infection.

An interior design concept can offer passive protection and actively boost immune systems by encouraging physical activity.



Three-dimensional, dynamic AT office chair, design: Wilkhahn, at height-adjustable Travis tables, design: wiege.

# Wilkhahn

## Immune-system Boosters

Regardless of pandemics and health and safety regulations, people's health should take center stage when designing workspaces. Because a healthy and motivating environment has huge potential to make people engage with their jobs and improve their productivity. Which is why we've been collaborating with health scientists for a long time now to develop 3D office chairs that boost people's metabolisms (and therefore immune systems), agility and increase their ability to combat stress. A healthy metabolism is also the best way of keeping someone fit.

### Tips for better immune systems

- Exercise
- Diet
- Fresh air

📄 For more information see the brochure on new ergonomics in digitalized offices

📺 A short video summarizes the most important aspects

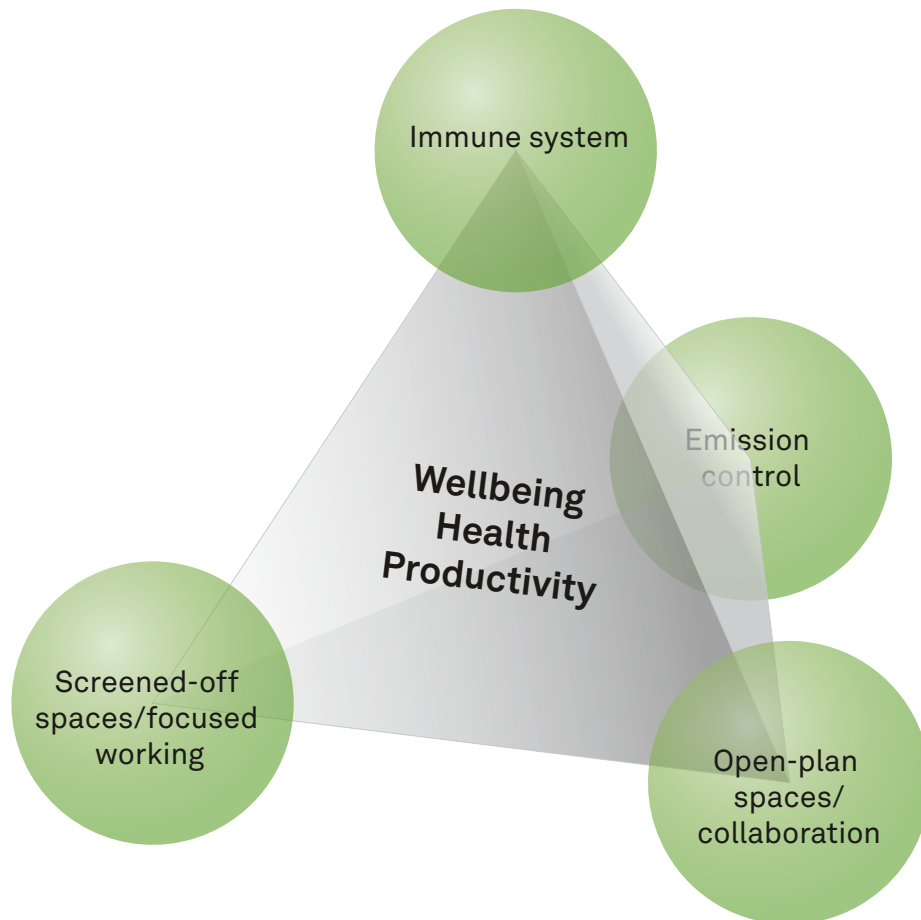


## Goodbye to Emissions and Ill-health

Health can also be impaired due to emissions from furnishings and poor indoor air quality too. Which is why our products meet all the relevant international standards on quality and ergonomics. Most of them also comply with UL Environment's stringent GREENGUARD standard, which strives to improve indoor air quality worldwide.

At the moment, indoor air quality is an important issue when it comes to aerosols spreading viruses. The purpose of face masks, visors and protective screens is to prevent infection via this route. But screens aren't just there to offer protection from viruses. When people need to focus on the task at hand, in addition to the lack of physical activity, visual distractions and noise also have a negative impact on productivity and health. These sorts of irritations are some of the most frequently quoted sources of stress in office workers.

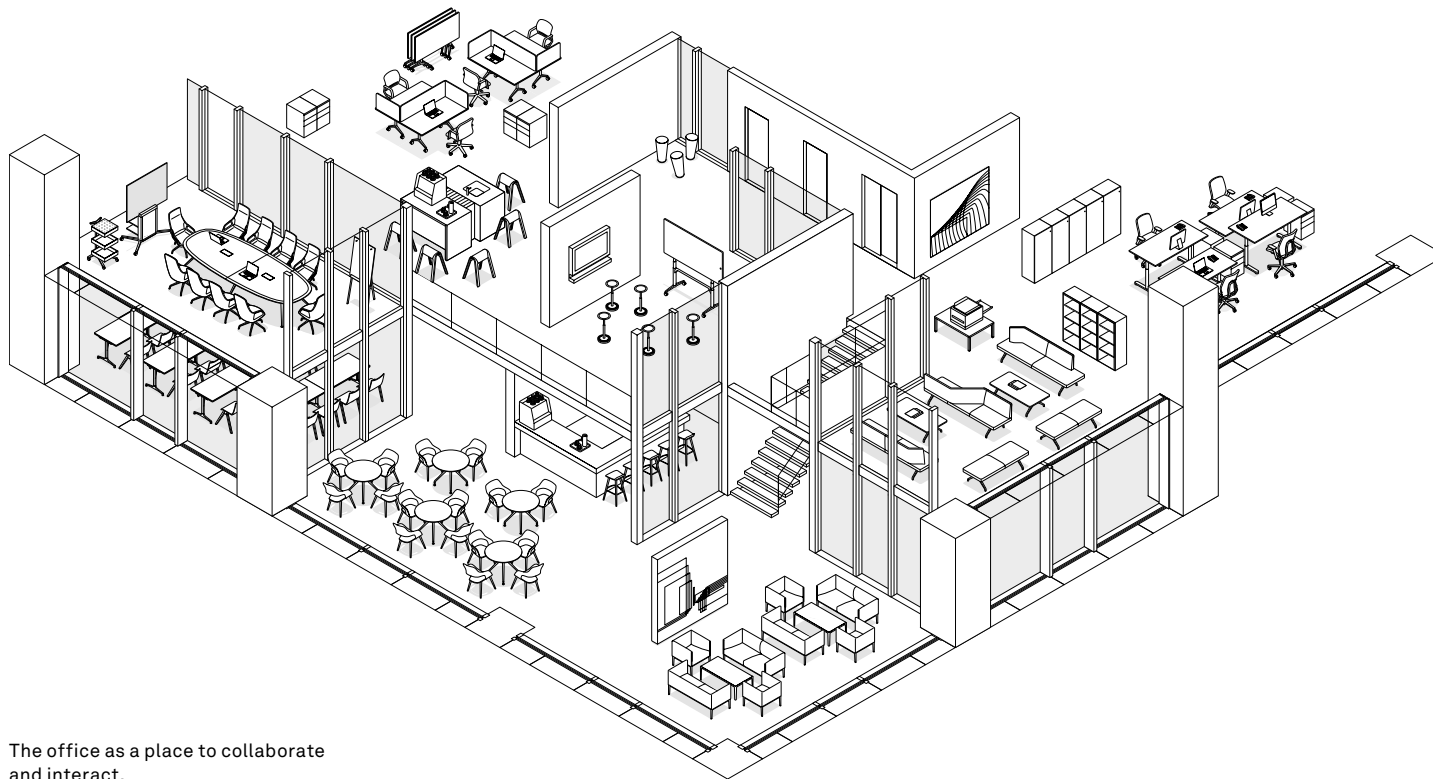
However, at the same time, offices are places for socializing, team-building and collaborating. Isolation is unhealthy in the long run. Fostering interaction also makes people healthier, more productive and innovative too.



### Stress factors

- Harmful substances
- Visual distractions
- Noise
- Infections

## Working in Cubicles or from Home?



The office as a place to collaborate and interact.

The return to cubicle offices is leading up a blind alley. If it were just a matter of avoiding contact with others and maintaining safe distances, working from home permanently would be the more effective route. Especially since the low volume of indoor air and the narrow access routes in small cubicle offices actually increase infection risks. On the other hand, more spacious offices make it much easier to avoid other people, keep at safe distances and use more efficient ventilation systems to exchange air.

Lockdown has highlighted the pros and cons of working from home. Commuting is passé, which possibly means it's easier to achieve a better work-life balance and to focus on work than in the office. Which is why, even when the coronavirus pandemic has come to a close, home offices will have established themselves as temporary places to work from. However, it's vital that any disruptions at home and the even greater lack of physical activity are compensated for by professional workspace solutions customized to reflect the environment concerned. Consequently, we offer scalable solutions that provide privacy and boost health and productivity in digital nomads or people working from home.

But even the best of home offices can't replace relationships with co-workers or the bonuses of those everyday rituals. And then there's the atmosphere of a workplace, spontaneous interaction and the type of chance meetings that are so important for creativity and innovation. As a shared space, the office needs to be somewhere to withdraw to, shut out any distractions, focus on the job at hand and where people are protected. It equally needs to be a place for collaborating, developing ideas and learning in a community.

## Maximum Flexibility is Our Response

# Wilkhahn



As a result, we've developed versatile office concepts and products that people can configure themselves. They can then switch between interaction with others or their own, screened-off space. These items are customizable, highly flexible and child's play to use. Therefore, they're future proof for the new post-corona normal so that people can keep their distance, or be up close and (more) personal, retreat to focus on the job at hand or collaborate with others. After all, a new wave of infection could turn everything on its head again...

To create temporary workspaces in lobbies and offer visual and acoustic privacy if required, Foldscreens can be added to Timetable tables in a matter of minutes.

Mobile, flip-top Timetable, design: Andreas Störiko, with Foldscreen panels fitted on the table, design: Wilkhahn and IN 3D dynamic office chairs, design: wiege.

## Flexible All-in-One Solution for Social Distancing, Sound-Absorbency and Privacy

# Wilkhahn



The Timetable family offers mobile, superbly designed flip-top tables so that collaborative spaces, conference and seminar rooms can be changed flexibly as required. Users simply wheel them in and set them up, wherever, whenever and however the furniture's required.

The Foldscreen panels transform all Timetable models into quieter, screened-off workspaces, where the panels are placed on or attached to the table to stop anyone from looking underneath. The clever part is that the panels are clamp-fitted without any tools required. Hinges and folding linkage strips make the panels easy to fold out and away. Therefore, they can rest on the flipped-up table tops if the furniture needs to be moved or put to one side. Although they are so lightweight and relatively thin, the three-ply design makes the panels very sound absorbent.

Mobile, flip-top Timetable Lift with battery-operated height-adjustment capability, design: Andreas Störiko with Foldscreen panels mounted at the back of the table, design: Wilkhahn, and dynamic 3D AT office chairs, design: Wilkhahn, with elevated sitting positions.

# Wilkhahn



Instead of cordoning off workspaces with barricade tape or introducing complex-to-organize shift patterns, users can set up tables themselves and reduce the number in no time to provide more distance. Seminar spaces or multipurpose rooms, which are empty due to the pandemic, can then quickly be turned into temporary offices for any co-workers that need them. All users have their own table with screens and keyboards, which they can move to a room that's big enough. Then there's no need for the painstaking hygiene precautions required when desks are shared.

Timetable and Foldscreen are ideal for furnishing seminar spaces and can be separated and turned into screened-off workspaces too.

Timetable tables, design: Andreas Störko, with Foldscreen acoustic panels, dynamic 3D AT office chair, design: Wilkhahn.



# Wilkhahn

## Foldscreen for mobile, flip-top tables

- Effective sound-damping panels for tables
- Panels mounted on or behind tables
- Tool-free assembly
- Retractable
- Pinnable
- Ideal for table tops up to 3 cm thick
- Side panels can be added
- 50% recycled material



## A Space for People to Meet up, Work or be Innovative

Mobile Timetable Lift with its cordless, electrical height-adjustment capability and its flip-top surface, which doubles as a whiteboard, is quite the all-rounder when it comes to versatile usage concepts. A meeting room can be turned into an interactive space with high tables and whiteboards for workshops and innovations in the blink of an eye. And if people are too close together, the table and its retractable Foldscreen panels becomes a screened-off desk with sit-stand options. People can configure their workspace just as they like it.

The Timetable family and Foldscreen are very flexible and compact to stow away. The ease with which they're configured motivates users to set them up themselves. Together, they're multipurpose table "tools" for agile workplaces that need to be adaptable, economical and future-proof.

📄 [Click here for detailed information on the Timetable models and Foldscreen.](#)



Timetable Lift ensures maximum versatility, design: Andreas Störiko.

With stackable Metrik cantilever chairs, design: White ID (top), with Sitzbockommel horse seat, design: RSW, and Stand-up stools, design: Thorsten Franck (bottom left) with the AT office chair and Foldscreen panels, design: Wilkhahn (bottom right).

## Professional Solutions Outside Offices too

# Wilkhahn



Similarly to office workers, digital nomads or home workers need clever, professional solutions to stay fit and healthy. The biggest differences are that room sizes aren't standardized and the lines between private and professional lives become blurred. What's more, highly concentrated styles of working tend to dominate and nearly everything takes place online, including meetings and contact with other people. Which is why it's virtually impossible to replicate the office workflow at home. Here are some examples, which are impressive because they are tailored to their surroundings and offer maximum flexibility there too.

The dynamic 3D ON office chair, design: wiege, also keeps home workers fit and agile.

# Wilkhahn

## Mobile Working with Fold-up Workspace

- Easily portable and space-saving to stow away
- Facilitates the switch from work to play
- Improves privacy in temporary, mobile workspaces
- Helps concentration
- Cuts down on noise
- Stops glare so enables working outdoors
- Can be personalized with notes and photos

People often lack space for a separate desk or their own room when working on their laptops at home or out and about. If tables in dining rooms, kitchens or on balconies have to be repurposed, then the Fold-up Workspace is both a practical and efficient solution. It's a mobile option that can be taken everywhere and set up on a table in seconds. It can then be folded down flat again and stored in a space-saving manner in a closet or hung up on a coat rack.

Once the Fold-up Workspace is set up, users and onlookers realize that the table's now become a place where someone needs to work. It provides privacy to allow people to focus on their tasks and also makes it harder for others to see confidential information on the screen from the side. The adjustable panel at the top also stops glare on the monitor so that people can even work on their patios, balconies or in their gardens. The self-supporting acoustic fleece cuts down on noise from phone calls and video conferences. The material is pinnable so that notes and favorite photos can be attached. And what's more, for those who like to stand up while working now and then, the Smart model can be tilted forward by 90° and used as a desktop that can take loads of up to 3 kg.

The Fold-up Workspace, design: Wilkhahn, turns a dining room into a temporary workspace. Paired here with the Occo range, design: jehs + laub.

- 👇 Occo table, chairs and bar stools
- 👇 Fold-up Workspace



# Wilkhahn

## Stationary, Compact, Flexible and Multipurpose Workspaces to Suit any Requirements

More spacious homes sometimes have spots for small tables that people use for both private and professional purposes. The classy Aline tables with their slender HPL table tops are available in formats starting at 140 cm x 70 cm already.

Or perhaps there's enough space in lounges or spare rooms for desks that are compact to stow away when not in use. The sturdy but equally elegant mAx folding table needs hardly any more space than an ironing board. And with its width starting at 180 cm and depth at 60 cm, it also serves as a place for buffets or guests to eat at.

The flip-top Timetable tables offer a wide range of mobile options to choose from. They can be moved from room to room as required, or stowed away in a space-saving manner.



Top left: The compact Aline table and the lightweight, stylish Aline task chair fit into any space. Design: Andreas Störiko

Top: The classy mAx folding table can be stowed like an ironing board in a box room, design: Andreas Störiko, with Metrik cantilever chairs, design: White ID



Left: People can wheel Timetable in and set it up wherever there's a convenient space to work at home, design: Andreas Störiko, with the laid-back-looking FS-Line task chair, design: Klaus Franck, Werner Sauer.

📏 Aline range

📏 mAx range

📏 Timetable range

📏 Metrik range

📏 FS-Line range

# Wilkhahn

## Movement for Sedentary Workers too

A three-dimensional office chair is a vital way of prompting movement and keeping people fit, particularly if they frequently work from home for longer periods of time. The AT Mesh and its transparent backrest has an understated look, ensures good airflow in places without air conditioning and its wide range of designs coordinate perfectly with people's homes. Blue Angel certification makes the model exceptionally environmentally friendly.



The 3D dynamic office chair and its transparent backrest fabric keeps people fit, is ideal for homes and has Blue Angel certification.

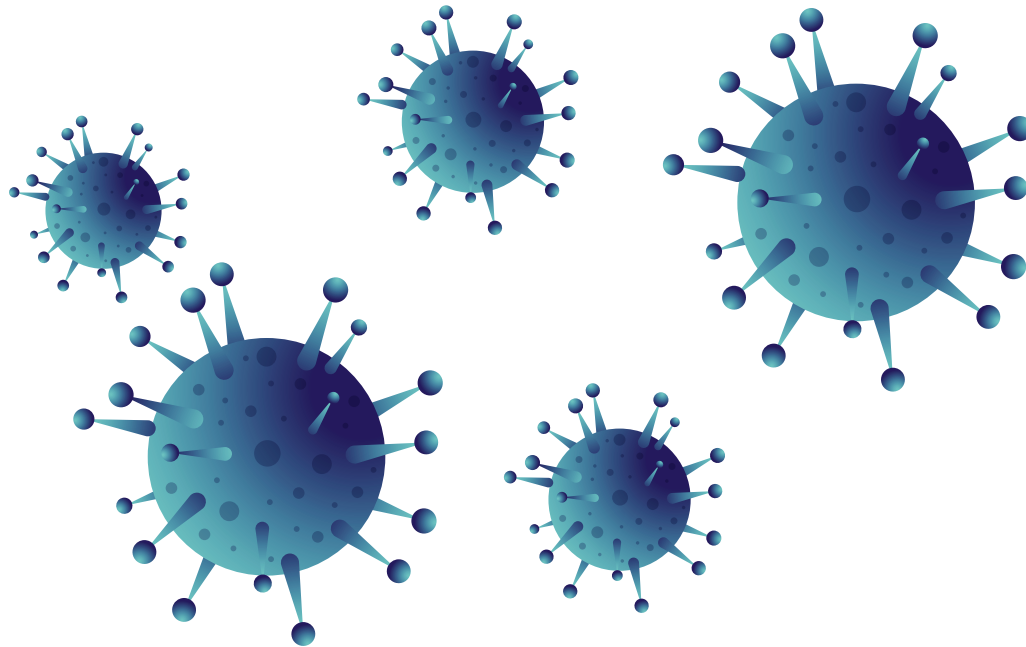
AT office chair, design: Wilkhahn, with an Aline table, design: Andreas Störiko.

[📄 AT range](#)

## Cleaning and Disinfecting Wilkhahn Furniture

# Wilkhahn

**The global spread of the current coronavirus (SARS-CoV-2) means hygiene standards are being tightened. Even if today's experts think it's very unlikely that the virus could be spread via furniture, we're doing everything we can to minimize the risk and protect the health of our customers and the people who use our furniture. Which is why we've collated important information for our partners and suppliers on how to clean and disinfect the surfaces and upholstery covers of Wilkhahn furniture.**



### What the Research Says

Science has shown beyond doubt that viruses need living hosts to survive. On inanimate surfaces, the lifespan, and therefore the theoretical infection risk, depends on the materials and ambient conditions, such as temperature and humidity. Virologists have proved that coronavirus can remain infectious on plastic surfaces for up to 72 hours, on fabric and steel surfaces for up to 48 hours and on cardboard for up to 24 hours. In the case of low viral loads, the time it survives on paper and porous materials, such as cotton, decreases to just a few minutes or an hour. It's generally assumed that the virus will be active for longer at low temperatures.

The new coronavirus is one of the enveloped viruses. The virus becomes inactive if surfactants, which are found in soap, washing-up liquid and many other cleaning agents, destroy its fat membrane. What's more, the virus can't infect you if you just touch it but only if it comes into contact with your mucous membranes. Up-to-date information is available on the websites belonging to the relevant health organizations and research institutes.

### Infection Control in the Office

In order to minimize the risk of infection in the office, some of the key precautions are that people must keep safe distances to one another, wash their hands regularly with soap and wear face masks. It's also important to air enclosed spaces frequently and ensure the temperature isn't too low. Objects that are used by several people such as door handles, light switches, equipment and furniture should be cleaned professionally and on a regular basis and surfaces people touch are to be disinfected as well.

The following summary shows which methods of cleaning and disinfection are suitable for each type of Wilkhahn surface and material and is based on information from the manufacturers. Therefore, we accept no liability and guarantee coverage should there be any visible changes in the surfaces nevertheless. Because of the variety of cleaning agents and their ingredients, we cannot make any general recommendations. To reduce the risk of altering the surfaces and colors, you should thoroughly test the cleaning and disinfection procedures on an area that's hidden from view beforehand.

## Cleaning and Disinfecting Upholstery Materials

# Wilkhahn



Just like when washing your hands, when cleaning inanimate surfaces, the surfactants in soap, washing-up liquids and virtually all cleaning agents deactivate the virus. Therefore, using these types of cleaning agents on surfaces doesn't just get rid of dirt but also provides protection from viruses in a way that's kind to the material.

## Upholstery Materials Made of 100% Polyester or Polyamide

Wilkhahn

### Cleaning

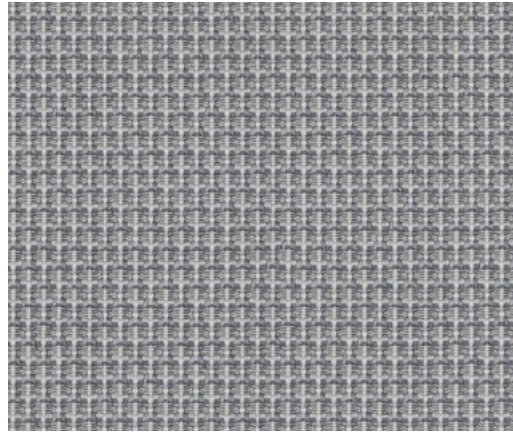
Vacuum down the material, wipe it with warm, soapy water, leave to take effect, wipe off any remaining soap with fresh water and then dry off with an absorbent cloth.

Dry clean.

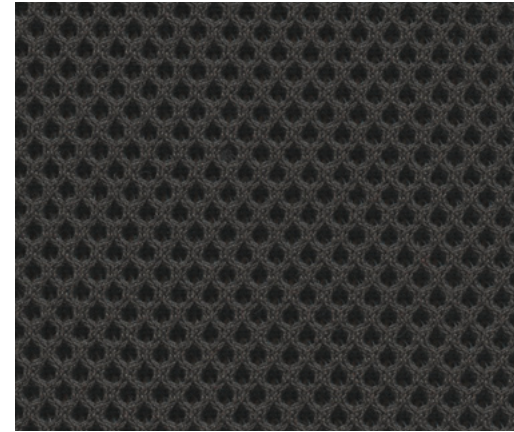
### Disinfection

Based on information provided by some manufacturers, polyester fabric does withstand all concentrations of ethanol (alcohol) but there can be changes in the colors if ethanol is used consistently.

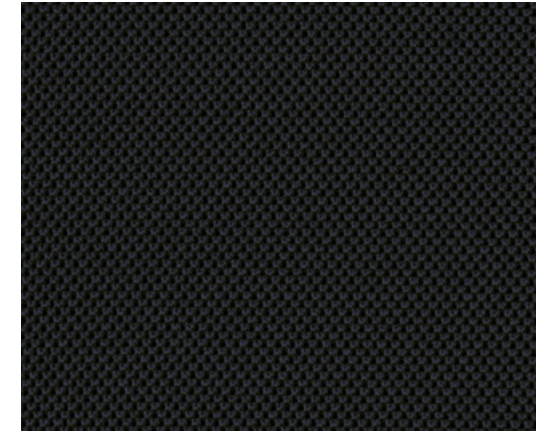
Polyester fabric can withstand being cleaned with bleach up to a concentration of 1:10, based on one part bleach (5.25 – 6.25% sodium hypochlorite) and 10 parts water or products with 1000 ppm of chlorine. If used consistently, the colors can fade.



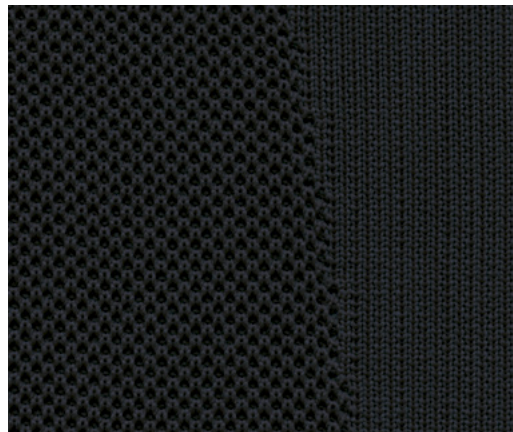
34 Vivid



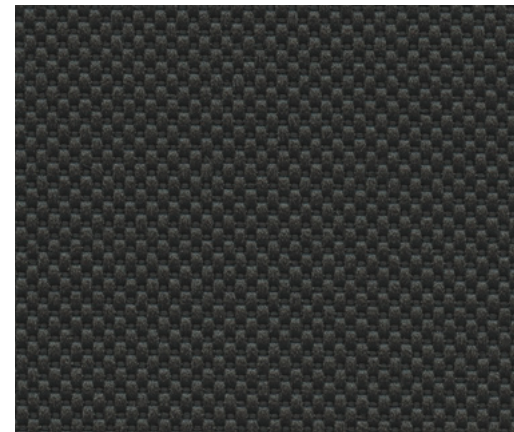
35 Fiberflex



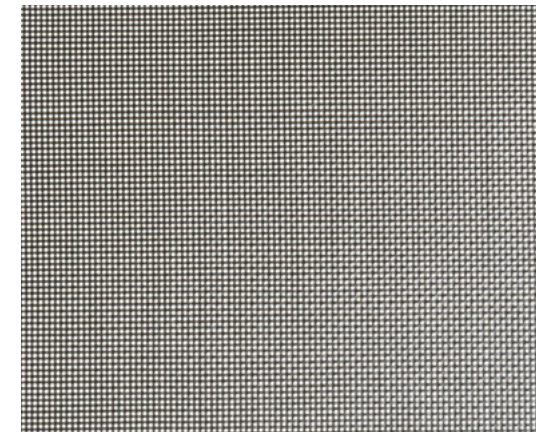
37 Racer



41 Formstrick



47 Nova



Coated polyester mesh (Aline)



## Upholstery Material Made of Trevira CS (Flame Retardant Polyester)

Wilkhahn

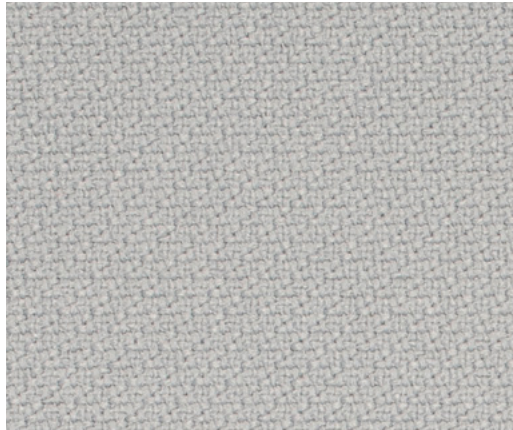
### Cleaning

Vacuum the material, wipe it with warm, soapy water, leave to take effect, wipe off any remaining soap with fresh water and then dry off with an absorbent cloth.

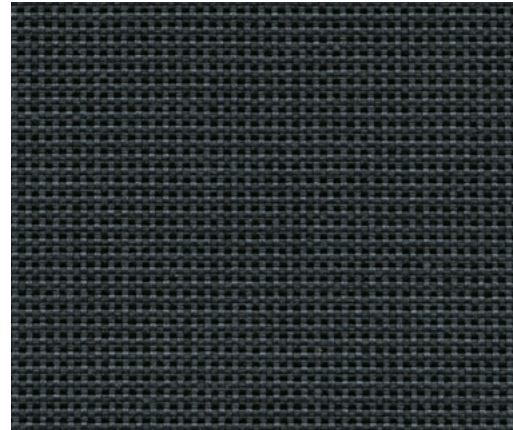
Dry clean.

### Disinfection

You can wipe down Trevira CS with Virkon S, Actichlor Plus, Prime Source ren-93 or ethanol (70 – 85%).



**54 Pitch**



**62 Bond**

## Artificial Leather Upholstery Material (80 % Made from Naturally Occurring or Renewable Materials)

# Wilkhahn

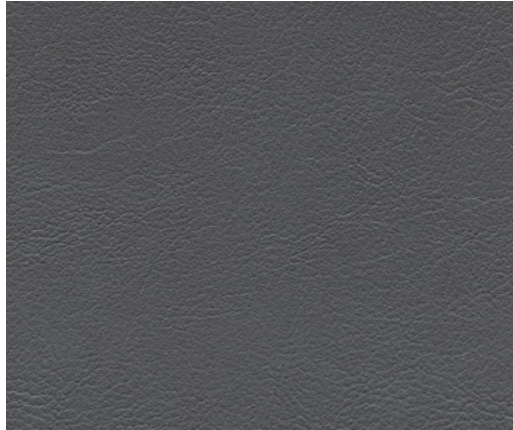
### Cleaning

Vacuum, wipe with warm and soapy water, wipe off any remaining soap with clear water and then dry with an absorbent cloth.

### Disinfection

According to the manufacturer, also suitable for healthcare environments and tested for compliance with the DIN EN ISO 109935+10 standard under the German Medical Products Act.

**Please note: Do not use the following disinfectants: Perform 3%, undiluted FD 350, mikrozid sensitive liquid.**



58 Evida

## Pure Wool or Wool-Rich Upholstery Material

# Wilkhahn

### Cleaning

Vacuum, wipe with warm, soapy water, leave to take effect, wipe off any remaining soap with clear water and then dry with an absorbent cloth.

Dry clean.

### Disinfection

Disinfectants based on ethanol (alcohol), with a maximum concentration of 85%.

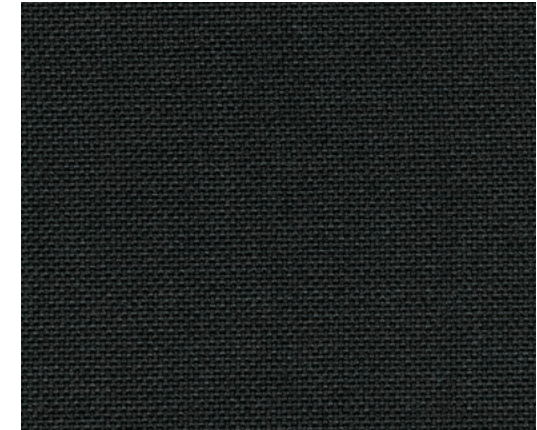
Steam-clean and disinfect with a combination of temperature and pressure to remove dirt and stains and kill off microorganisms.



**60 Blend**  
100% Wool



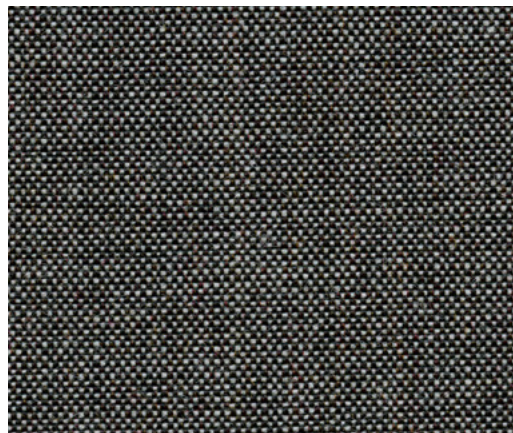
**63 Auris**  
100% Wool



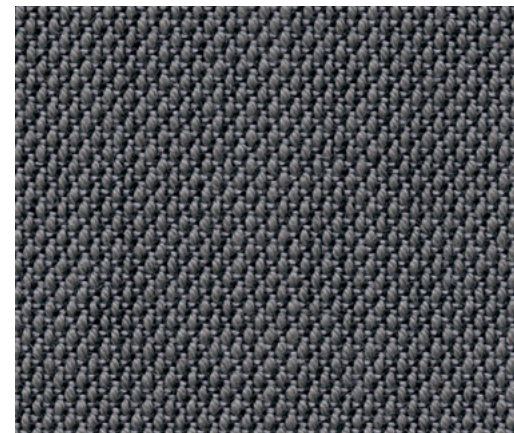
**66 Lona**  
85% Wool, 15% Polyamide



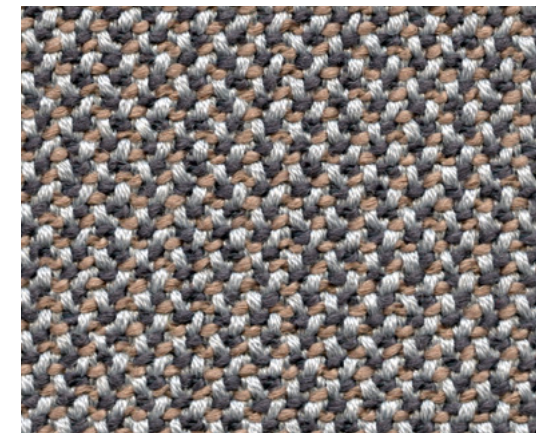
**69 Granit**  
50% Wool, 50% Cotton



**68 Kvadrat Remix 2**  
90% Wool, 10% Worsted



**91 Kvadrat Steelcut Trio 3**  
90% Wool, Worsted, 10% Nylon



**92 Credo**  
95% Wool, 5% Polyamide

## Leather Upholstery Material

Wilkhahn

### Cleaning

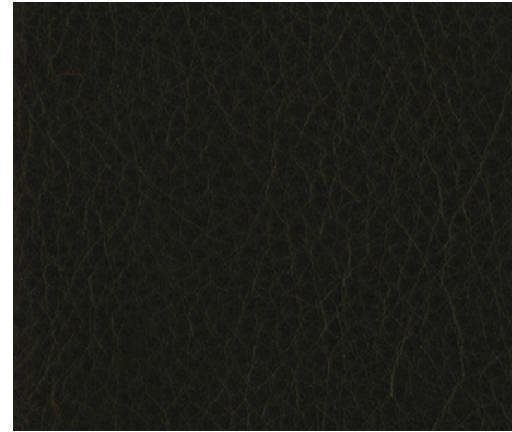
Vacuum, wipe carefully with a damp cloth and apply a dry woolen cloth all over to remove any moisture.

### Disinfection

Do not use any chemical-based cleaning agents and disinfectants because they could damage the color and texture of the surface.



74 Leather



87 Leather

## PET Acoustic Fleece (Polyethylene Terephthalate)

Wilkhahn

### Cleaning

Vacuum, wipe with pH-neutral soapy water (using a lint-free cloth) and allow it to take effect, wipe off any remaining soap with clear water and then dry with an absorbent, lint-free cloth.

### Disinfecting contact surfaces

Spray lightly with disinfectant based on ethanol (alcohol) and then wipe with an absorbent cloth.

**Please note: Don't use any cleaning agents and disinfectants that contain halogenated solvents.**



## Recommendations for Cleaning and Disinfecting Frames, Seat Shells, Armrest Pads and Table Surfaces

**Wilkhahn**



**Just like the covers, thorough cleaning with cleaning agents that contain surfactants is usually enough to deactivate the virus. If extra disinfection is required, this could be restricted to the contact surfaces.**

## Frame Components, Seat Shells and Armrest Pads Made of Plastics (Polyamide, Polypropylene, Polyurethane, Thermoplastic Polypropylene)

# Wilkhahn

### Cleaning

Wipe with warm, soapy water, let it take effect and wipe off any remaining soap with clear water.

### Disinfecting contact surfaces

Use disinfectants low in ethanol; let them briefly take effect and then carefully wipe dry with a soft cloth/fleece cloth.

**Please note: Depending on how thorough disinfection is, changes to and discoloring of the upholstery materials and surfaces can't definitely be ruled out. Therefore, we recommend trying out the cleaning and disinfection method somewhere where it's hidden from view first.**



## Frames of Chairs and Tables Made of Aluminum (Polished, Bright Chrome-Plated, Coated) and Made of Steel (Bright Chrome-Plated, Coated)

# Wilkhahn

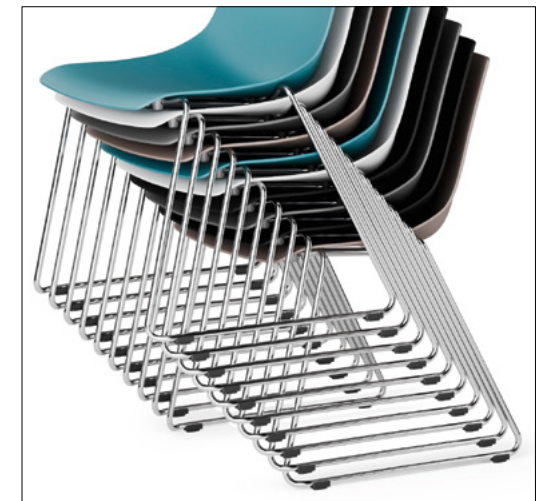
### Cleaning

Wipe with a soft, dry or moistened cloth; if dirt is stubborn, also use pH-neutral cleaning agents or turpentine.

### Disinfecting contact surfaces

Use disinfectants low in ethanol; briefly let it take effect and then carefully wipe dry with a soft cloth.

**Please note: Always prevent the powder coating from coming into contact with alkaline or acid substances.**





## Chair and Table Frames and Table Surfaces/Edges Made of Solid Wood (Oiled)

# Wilkhahn

### Cleaning

Wipe with warm soapy water, briefly let it take effect and then carefully wipe dry with a soft cloth.

### Disinfecting contact surfaces

Only use surfactants (soapy water) and no chemical disinfectants as these damage the color and texture of the surface.



## Varnished, Veneered Table Surfaces and Edges

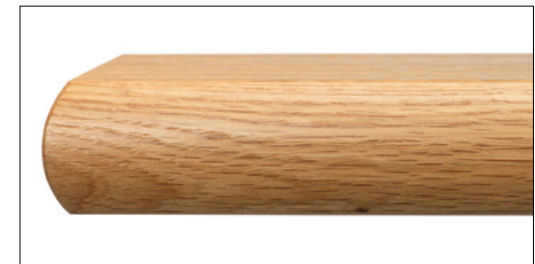
# Wilkhahn

### Cleaning

Wipe with warm soapy water, briefly let it take effect and then carefully wipe dry with a soft cloth.

### Disinfecting contact surfaces

Wipe varnished surfaces with standard disinfectant wipes that are available in drug stores.



## Table Surfaces Made of Laminate and HPL (High Pressure Laminate)

# Wilkhahn

### Cleaning

Wipe with warm soapy water, let it take effect, remove any remaining soap with clear water and then wipe dry with a soft cloth.

You can remove more stubborn dirt with warm soapy water or detergent solution or with a standard cleaning agent and leave it to soak for longer if required. Only use soft, clean cloths, soft sponges or soft brushes for cleaning with.

### Disinfection\*

Laminates are resistant to disinfectants that have one of the following substances or are based on one of the following chemicals:

- Ethanol 70%
- Formalin 1% and 5%
- p-Chloro-m-cresol 0.3%
- Na Tosyl chloride 1%
- Alkyl dimethyl benzyl ammonium chloride 0.1%

\* Does not apply to soft matte laminate.

**Please note: You can only use cleaning agents that are not abrasive, very acidic or whose contents have a significant bleaching impact.**



## Acrylic Glass

### Cleaning

Use a soft, lint-free cloth to wipe down with warm soapy water (using standard washing-up liquid), leave it to take effect, remove any remaining soap with clear water (don't rub dry to prevent any scratches or electrostatic build-up).

Remove heavy soiling with a cleaner for plastics, isopropyl or benzene-free mineral spirits (US) or white spirit (UK).

**Please note: Do not use any cleaning agents with benzene, ethanol, alcohol, organic substances or thinners.**

### Disinfection

Spray with isopropyl (2-propanol) and wipe with a moist cloth.

**Please note: Standard disinfectants can damage the surface.**



# Wilkhahn

## Wilkhahn and sustainability

# Wilkhahn



In over 100 years of its corporate history, Wilkhahn can look back on a sustainability philosophy that has grown over decades. Aspects such as durability, social fairness, environmental responsibility and cultural orientation have been evolving as corporate principles since the 1950s. Wilkhahn today is regarded internationally as a model of excellence, not only on account of its products but also because of its modern corporate philosophy. This is because the company realized early on that sustainable design should embrace environmental aspects, improve social relationships and define the cultural role of a company. This approach to the way we do business creates a bond between us and our customers throughout the world. There is surely no more rewarding task than working together for a successful future that is worth living in.

📄 [Current sustainability report with environmental statement](#)



For further information please contact us!

# Wilkhahn



Wilkening + Hahne GmbH+Co.KG  
Fritz-Hahne-Str. 8  
31848 Bad Münder  
Germany  
Tel.: +49 5042 999 100  
contact@wilkhahn.de  
www.wilkhahn.com



Roof of one of the four pavilions,  
which were designed by architect  
Frei Otto, on the Wilkhahn site.  
Photo: Klemens Ortmeier